



# **PAWARIM KOMUNITI**

Papua New Guinea Off-Grid Electrification Program

**General Information and  
Expression of Interest Form**

January 2022



*A family in Oro Province with their newly installed solar power and light through the Pawarim Komuniti Light for Learning project, delivered by KTF. Credit: KTF*



*Community health workers completing vaccine training through the Pawarim Komuniti Light for Life project, delivered by KTF. Credit: KTF*

This publication is available on our website  
[www.pawarimkomuniti.org.pg](http://www.pawarimkomuniti.org.pg)

Please send enquiries to  
[info@pawarimkomuniti.org.pg](mailto:info@pawarimkomuniti.org.pg)

Material in this publication may not be reproduced in part or in whole without written permission from the publishers.

©2022. All rights reserved.

*Powering communities by supporting innovative clean energy solutions*

# ABOUT THE PROGRAM

**Pawarim Komuniti** is an off-grid electrification program funded by Australia to support access to clean energy services in rural and remote communities throughout Papua New Guinea (PNG). It is part of Australia’s commitment under the PNG Electrification Partnership to help PNG meet its target of connecting 70% of the country to electricity by 2030.

Pawarim Komuniti supports PNG's *Medium Term Development Plan III (2018–2022)*. This states:

*‘Energy powers economic growth and development of the country. There is increased need for clean and reliable energy sources to accelerate this growth and development. Given the abundance of clean energy sources, PNG is well positioned to realise PNGDSP 2010 target of providing 70% electricity access rates to households and business houses.*

*‘More investment in clean energy generation, such as hydro, solar, wind, biomass and geothermal power generation will be accelerated to reduce dependence on diesel power generation. Continued strategic investment in the sector for provision of reliable and clean energy is an essential driver for economic growth.’*

## PAWARIM KOMUNITI AIMS

1

Provide rural households, community service facilities and businesses with reliable and affordable access to clean energy services

2

Support government, development partners, civil society and private sector with information on successful off-grid electrification models

## KEY OBJECTIVES

- Deliver access to clean energy services that have a positive development impact on people in rural and remote communities
- Deliver sustainable off-grid energy projects by ensuring local ownership and community participation
- Provide technically and economically viable clean energy solutions, with minimum environmental impact
- Enable equitable and inclusive access to clean energy through mainstreaming gender, disability and social inclusion (GEDSI) in the design and implementation of projects
- Innovate and pilot new models of delivery for new technologies that are adapted to PNG.





## WHAT IS OFF-GRID ELECTRIFICATION?

Off-grid electrification refers to stand-alone power systems that provide rural households, businesses, public or community service facilities with clean energy services. Off-grid electrification is fast becoming the preferred means to connect people to electricity in countries like PNG where communities are isolated, and the cost of grid connectivity is high.

Research in the energy sector highlights that for much of the PNG population, off-grid, decentralised solutions will need to be a significant part of the solution for energy access in rural areas and may well remain the most appropriate option for the near and medium term.

With 80% of people in PNG living in remote towns and communities with limited access to vital services, increasing access to energy services will help improve living standards and allow government and civil society to deliver improved education and health services at the community level. Electrification of communities also improves safety and security through street lighting.

Access to energy services is also important for fostering economic growth in the private sector, especially for small and medium enterprises that enhance income generation.



## PNG POWER EXCLUSIVITY ZONE

PNG Power Ltd (PPL) owns and operates three major electricity grids (Port Moresby, Ramu and Gazelle) and mini grids in most provincial centres.

PPL has exclusivity to a 10-kilometre radius around its existing grid infrastructure. This prohibits the establishment of any off-grid technologies within the 10 kilometre exclusivity zone.

Under Pawarim Komuniti, off-grid refers to systems generating less than 1MW of power anywhere outside the current PPL exclusivity zone and areas clearly demarcated for grid extension.



# FUNDING

## FUNDING FOR OFF-GRID ELECTRIFICATION PROJECTS

Funding available for off-grid electrification projects is between PGK500,000 to PGK5 million per project.

### PROJECT FUNDING AVAILABILITY

Funding is specifically meant to support off-grid energy projects to deliver clean energy services to remote communities in PNG. Applicants are required to demonstrate how their project will deliver against Pawarim Komuniti's key objectives.

Projects should be developed through the partnership of multiple actors and preferably stimulate an ongoing market system. The types of projects that would be eligible for funding are:

- Off-grid solar home systems/single-appliance systems distribution projects
- Productive uses of energy projects, providing micro, small and medium enterprises with

electricity, heat and mechanical power to enhance income generation and provide essential services

- Mini grids projects, establishing stand-alone electrical power subsystems to provide energy services to multiple users
- Projects combining the above-listed options.

All projects are expected to meet minimum technical standards and comply with all legal and regulatory requirements. Relevant Initial Environmental Examination or Impact Assessments should be undertaken.

### APPLICANT FUNDING ELIGIBILITY

- Applicant/s must be registered with PNG Investment Promotion Authority (IPA)
- Applicant/s must provide a valid Tax Identification Number (TIN)
- Applicant/s must provide a valid Certificate of Compliance issued by PNG Internal Revenue Commission (IRC)
- Clear and certified land title for mini grid projects
- Audited accounts of the last two consecutive years without major qualifications
- Project management experience in a similar field is desirable
- Support letters from the relevant provincial administration and or communities at the proposed project sites for ownership and long-term sustainability
- Should the applicant/s be invited to submit a full proposal, Pawarim Komuniti will conduct a Due Diligence Preliminary Partner Statement prior to submission. A detailed Due Diligence Assessment will also be conducted prior to the awarding of the grant.



## GENDER EQUITY, DISABILITY AND SOCIAL INCLUSION AND SAFEGUARDS

A key objective of Pawarim Komuniti is to ensure that gender equity, disability and social inclusion (GEDSI) and safeguards are integrated in every aspect of the project cycle, from community consultation and implementation of the project, and that it is sustained after project completion.

View guidance on GEDSI and safeguards at [www.pawarimkomuniti.org.pg](http://www.pawarimkomuniti.org.pg)



## MONITORING, EVALUATION AND LEARNING (MEL)

Monitoring, evaluation and learning sets out principles and the approach used to monitor and evaluate the project with an aim to:

View guidance on GEDSI and safeguards at [www.pawarimkomuniti.org.pg](http://www.pawarimkomuniti.org.pg)

- Demonstrate accountability by ensuring projects achieve their planned results
- Learn about and improve program operations
- Generate knowledge to inform future renewable off-grid programming in PNG.



# APPLICATION PROCESS

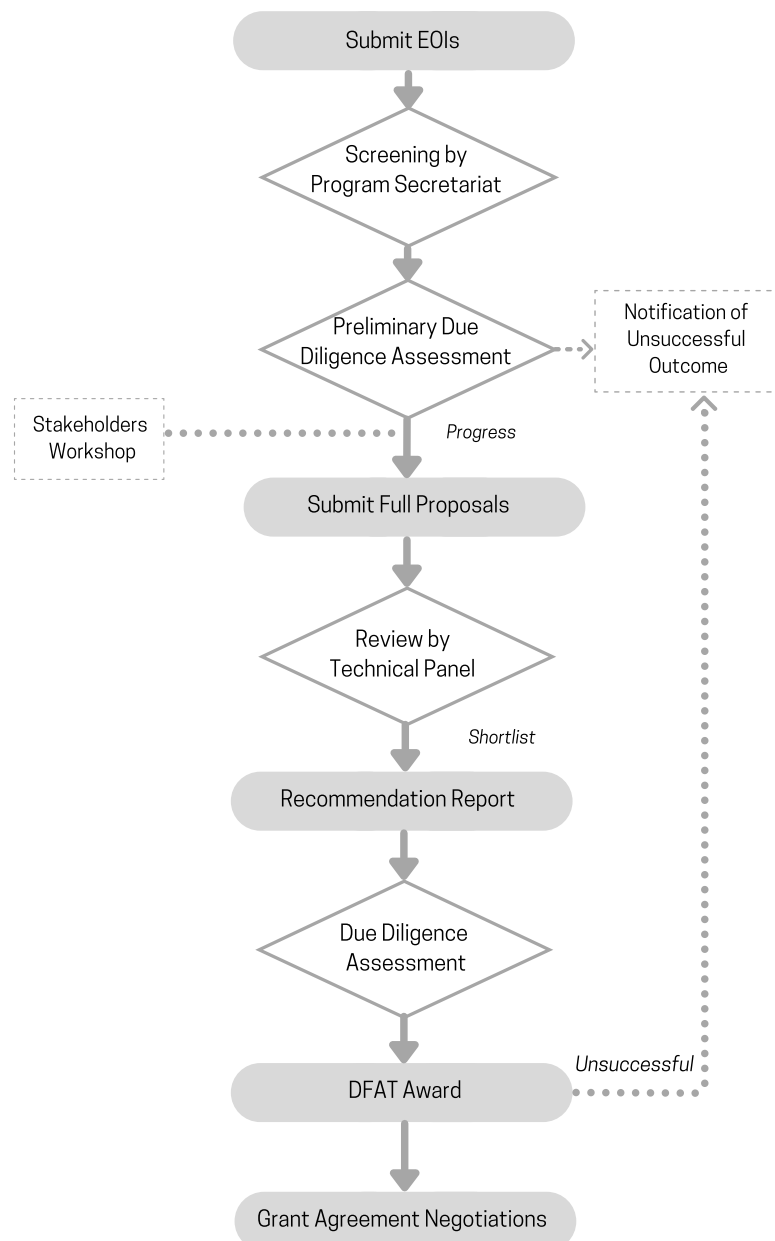
The expression of interest application form can be submitted to Pawarim Komuniti at any time.

Submit applications by email to [apply@pawarimkomuniti.org.pg](mailto:apply@pawarimkomuniti.org.pg)

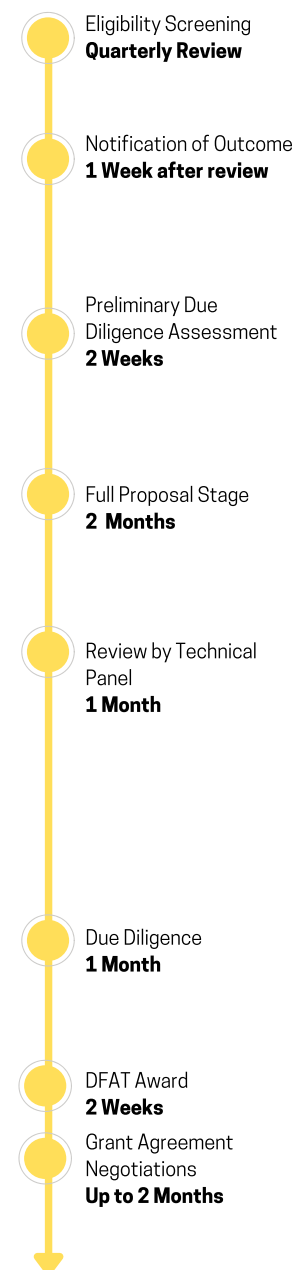
Applications will be reviewed three times a year and the cut-off dates for 2022 are:

- 28 March 2022
- 1 August 2022
- 21 November 2022

## APPLICATION PROCESS



## TIMELINE *(indicative)*



# EXPRESSION OF INTEREST APPLICATION FORM

## INFORMATION FOR APPLICANTS

This expression of interest (EOI) application form helps Pawarim Komuniti to learn more about the applicant’s organisation, partners and intended project, focusing on its rationale, concept and objectives.

Please note that although submitting an EOI application form is the first step in applying for funding, it does not guarantee an invitation to submit a full proposal and does not guarantee funding. Only successful applicants will be invited to develop a full grant proposal with the support of Pawarim Komuniti.

## PROPOSED PROJECT

Proposed project name	
Location (LLG, district, province)	
Total funding requested (PGK500,000 to PGK5 million)	
Duration of project (approximate)	
Lead applicant	
Co-applicant/s	
Type of project (please circle/highlight)	<p>Off-grid solar home systems/single appliance systems distribution projects</p> <p>Productive uses of energy projects</p> <p>Mini grids projects, establishing standalone electrical solar/hydro/hybrid-powered substations to provide clean energy services to multiple users</p> <p>Projects combining the above-listed options</p>
Project outcome (summary)	



## INFORMATION ON LEAD APPLICANT

<b>Applicant name and type</b> e.g. company, non-profit, association and other		
<b>Brief description of the organisation</b> e.g. ownership, major shareholders, directors and their backgrounds, number of employees, years in operation, core business, international experience, donor experience, previous work in PNG and abroad, activities related to energy sector including off-grid and specifically mini grid electrification, working experience with local government agencies and communities, details of past assistance from other donors/ development partners <i>(max 500 words)</i>		
<b>Date and place of registration</b>		
<b>Registration number</b>		
<b>Tax Identification Number (TIN)</b>		
<b>Postal address</b>		
<b>Telephone</b>		
<b>Email address</b>		
<b>Website (if available)</b>		
<b>Social media links (if available)</b>		
<b>Contact people</b>	<b>Organisation Contact Person 2 (primary contact)</b>	<b>Organisation Contact Person 2 (mandated signatory)</b>
<b>Name and position</b>		
<b>Phone contact</b>		
<b>Email address</b>		

## INFORMATION ON CO-APPLICANT

<b>Applicant name and type</b> e.g. company, non-profit, association and other		
<b>Brief description of the organisation</b> e.g. ownership, major shareholders, directors and their backgrounds, number of employees, years in operation, core business, international experience, donor experience, previous work in PNG and abroad, activities related to energy sector including off-grid and specifically mini grid electrification, working experience with local government agencies and communities, details of past assistance from other donors/development partners <i>(max 500 words)</i>		
<b>Date and place of registration</b>		
<b>Registration number</b>		
<b>Tax Identification Number (TIN)</b>		
<b>Postal address</b>		
<b>Telephone</b>		
<b>Email address</b>		
<b>Website (if available)</b>		
<b>Social media links (if available)</b>		
<b>Contact people</b>	<b>Organisation Contact Person 2 (primary contact)</b>	<b>Organisation Contact Person 2 (mandated signatory)</b>
<b>Name and position</b>		
<b>Phone contact</b>		
<b>Email address</b>		

\*for additional co-applicants, copy this page. Skip the table above if no co-applicant is participating in this project.

## INFORMATION ON COMPLEMENTARY EVIDENCE OF THE PARTNERS

How will you divide the works/ responsibilities between or amongst partners? e.g. technical responsibility and community engagement responsibility <i>(max 100 words)</i>	
Explain how this partnership helps in implementing the project concept, outlining most relevant synergies <i>(max 100 words)</i>	

## CONCEPT INNOVATION

Briefly describe the key contribution of the Pawarim Komuniti funding e.g. materialise the project/accelerate investment/ expansion <i>(max 100 words)</i>	
What is the main innovation related to? (technology/business model/ development impact/synergies of partners) Please describe. <i>(max 300 words)</i>	
What are the critical factors for the success of the project? <i>(max 200 words)</i>	
Do you see any risks related to land or water use for the project? Do you see any other risks? <i>(max three risks)</i>	
Please describe how you plan to address and solve land or water issues and any other grievances, if any? <i>(max 100 words)</i>	

## SUSTAINABLE DEVELOPMENT IMPACT

<p>Please list and describe the planned development impacts of the project e.g. Pawarim Komuniti objectives, Sustainable Development Goals, climate change, gender equity, disability and social inclusion, poverty reduction, human rights <i>(max 400 words)</i></p>	
<p>Please list and quantify the project development targets and target groups e.g. access to electricity to 100 households, businesses, 10 direct jobs</p>	
<p>Describe how the proposed project will address environmental conservation and climate change <i>(max 300 words)</i></p>	
<p>How will the project improve community livelihood or incomes? <i>(max 200 words)</i></p>	
<p>How will the project aim to stimulate existing market systems? <i>(max 100 words)</i></p>	

## GENDER EQUITY, DISABILITY AND SOCIAL INCLUSION (GEDSI) AND SAFEGUARDS

<p>Briefly describe the proposed project's main approach to address GEDSI and safeguards, and the anticipated outcomes <i>(max 200 words)</i></p>	
<p>Please describe how you will involve the beneficiaries in decision making processes (e.g. community engagement plan) <i>(max 200 words)</i></p>	

## MONITORING, EVALUATION AND LEARNING (MEL) CHECKLIST

Please confirm that you intend to collect and will have the capacity to report basic monitoring data, such as baseline data, endline data, stories of change and regular progress on your project from the communities and people that your project seeks to benefit	<p>We confirm that we intend to and will have the capacity to collect and report baseline data, endline data, stories of change and regular progress on our project from the communities and people that our project seeks to benefit</p> <p>YES / NO (please circle/highlight)</p>
Please confirm that you have considered the (i) personnel/staff requirements, (ii) time necessary and (iii) costs and any other resources required to undertake MEL activities in your proposed project	<p>We confirm that we have considered all the below:</p> <ul style="list-style-type: none"> <li>- Personnel/staff requirements</li> <li>- Time necessary</li> <li>- Costs and/or any other resources (office space, stationery, computer access) needed to carry out MEL activities for the proposed project</li> <li>- Preliminary survey, study report for the proposed project (if available)</li> </ul> <p>YES / NO (please circle/highlight)</p>

## BUSINESS MODEL

Please describe the key elements of the project business model in respect to the commercial rationale and viability <i>(max 300 words)</i>	
How will this project affect the target market/s? <i>(max 200 words)</i>	
Please describe how the proposed mini grid project generates revenue to meet its operation and maintenance. What will be the tariff structure and rates? <i>(max 200 words)</i>	

## FINANCIAL OVERVIEW OF LEAD APPLICANT

If possible, please list the turnover (revenue) for the last three years (PGK)	2019: 2020: 2021:	
If possible, please list the financial results (net profit) for the last 3 years (PGK)	2019: 2020: 2021:	
If possible, please list total assets and liabilities value for the last 3 years (PGK)	2019: 2020: 2021:	2019: 2020: 2021:

## ESTIMATED FINANCIAL PROPOSAL

Costs	% of total costs	PGK
<b>1. Pre-investment costs</b>		
- Survey/design		
- Others		
<b>2. Project development</b>		
- Management and engineering		
- Capacity building, training (local operator)		
- Community engagement		
<b>3. Costs of mini grid components/installation</b>		
- Generation		
- Storage and powerhouse		
- Conversion		
- Distribution and consumption		
- Customer systems (indoor household wiring, etc)		
<b>4. Management and operation (including personnel costs)</b>		
<b>5. GEDSI, safeguards and MEL (personnel, activities and other possible cost implications)</b>		
<b>6. Others (insurance, transportation, etc, please specify)</b>		
-		
-		
-		
<b>Total project costs</b>		
<b>Financing the project</b>		
Financing request to Pawarim Komuniti		
<b>Co-financing</b>		
Lead applicant		
Co-applicants		
Others (specify)		
<b>Community participation (if any, in kind or cash)</b>		
<b>Total financing</b>		

## PREVIOUS FUNDING EXPERIENCE

If you have received funding before, please list the names of your past (last 3 years) and current funders. Please include previous donor funding.

Funder(s)	Current or past	Name and contact details	Project title	Budget

## ADDITIONAL DOCUMENTATION

Please submit the following documents with the EOI:

- Certificate of registration of the organisation
- Preliminary survey, study report for the proposed project (if available)
- Project completion report of similar projects (if available)
- Land title, land lease agreement or any other consent document with customary landowners (if available/relevant).



[www.pawarimkomuniti.org.pg](http://www.pawarimkomuniti.org.pg)

To contact the Pawarim Komuniti team, email  
[info@pawarimkomuniti.org.pg](mailto:info@pawarimkomuniti.org.pg)

